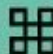



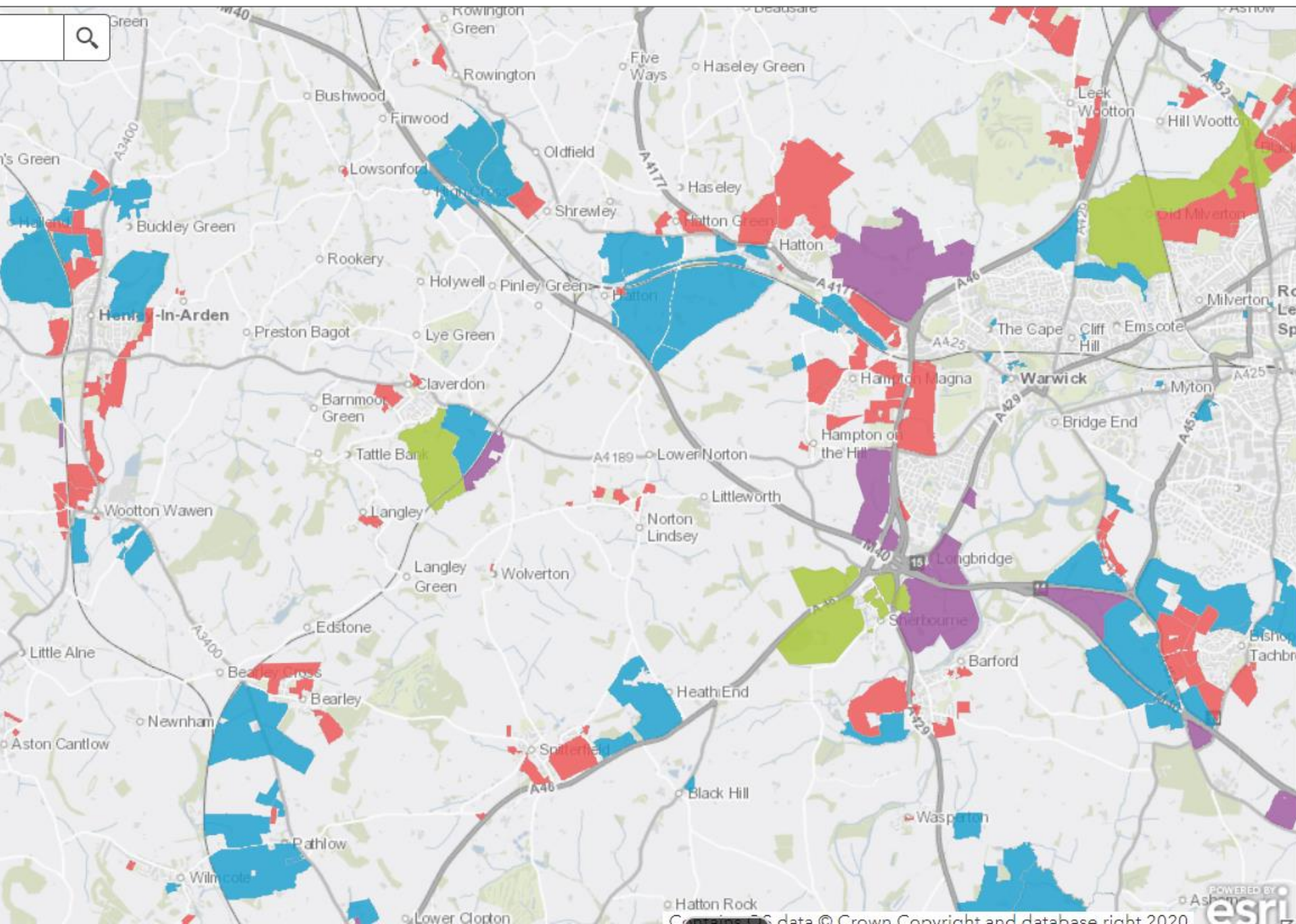




Hatton Villages

 **Hill**  **Turley**  **GORT SCOTT**  **MORRIS+COMPANY**  **BMD**  **SLR**  **BWB**  **EFM**



Legend

1st and 2nd Call for Sites (2021/23) updated M 2024

- Housing / Residential
- Mixed
- Employment / Industrial / Commercial
- Open Space / Biodiversity / Green Infrastructure
- Leisure / Community
- Other

SWLP Boundary



WARWICK

WARWICK PARKWAY



HATTON PARK

HATTON HILL

HATTON COUNTRY WORLD

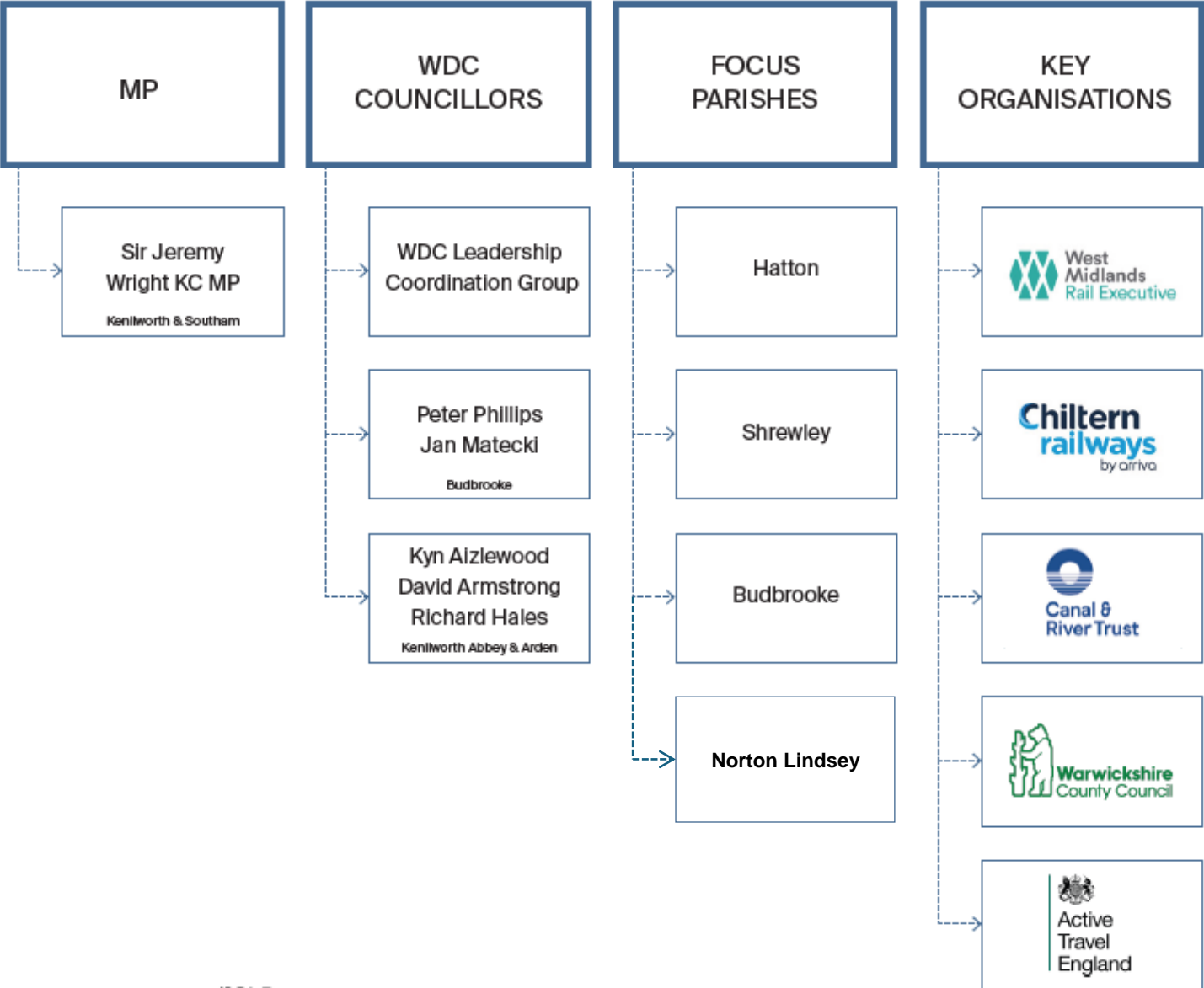
GRAND UNION CANAL
BIRMINGHAM - LONDON LINE

HATTON STATION

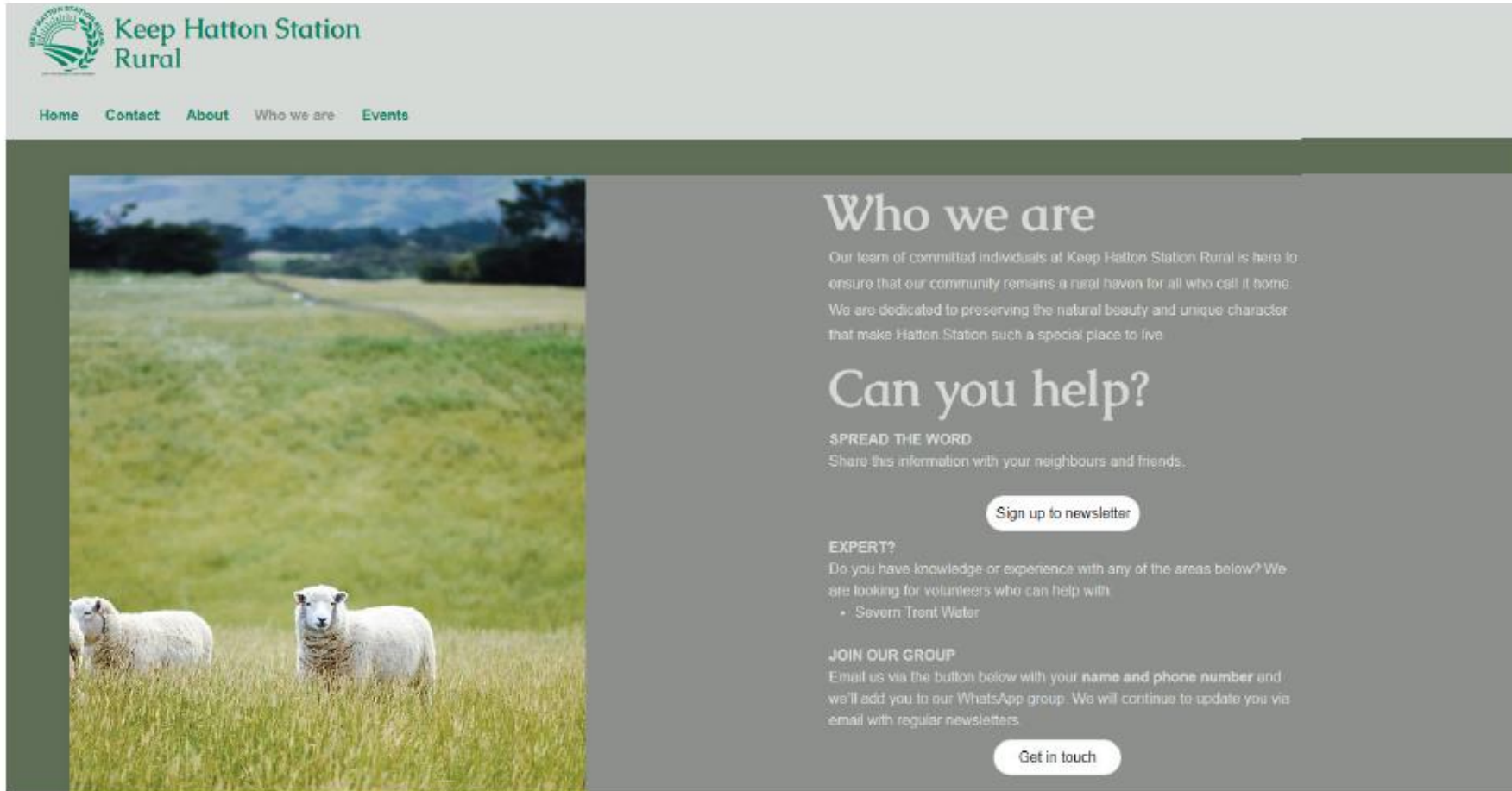



M40

Stakeholder Engagement



Keep Hatton Station Rural



 Keep Hatton Station Rural

[Home](#) [Contact](#) [About](#) [Who we are](#) [Events](#)

Who we are

Our team of committed individuals at Keep Hatton Station Rural is here to ensure that our community remains a rural haven for all who call it home. We are dedicated to preserving the natural beauty and unique character that make Hatton Station such a special place to live.

Can you help?

SPREAD THE WORD
Share this information with your neighbours and friends.

[Sign up to newsletter](#)

EXPERT?
Do you have knowledge or experience with any of the areas below? We are looking for volunteers who can help with:

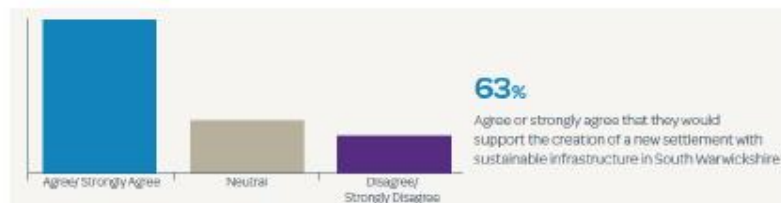
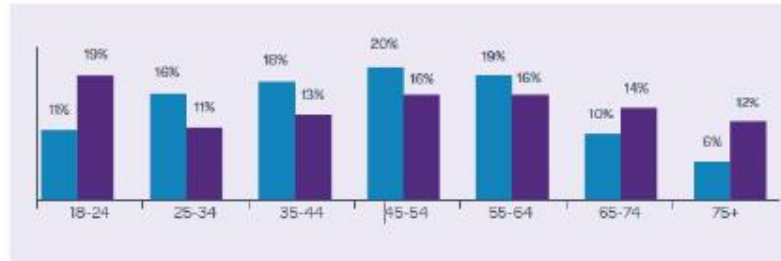
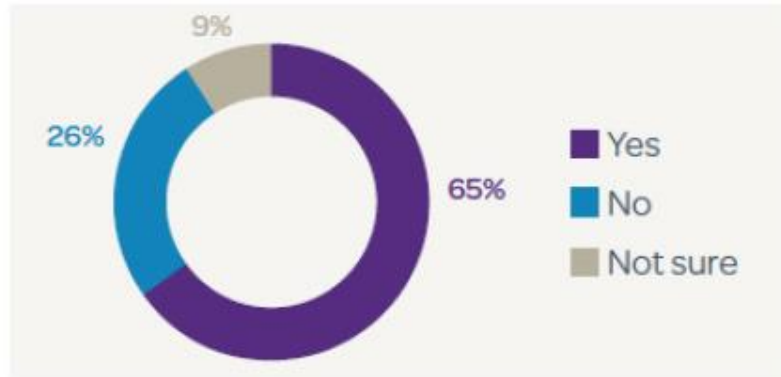
- Severn Trent Water

JOIN OUR GROUP
Email us via the button below with your **name and phone number** and we'll add you to our WhatsApp group. We will continue to update you via email with regular newsletters.

[Get in touch](#)

Insight-led Masterplan Design

Is there a shortage of housing in your price range in your area?



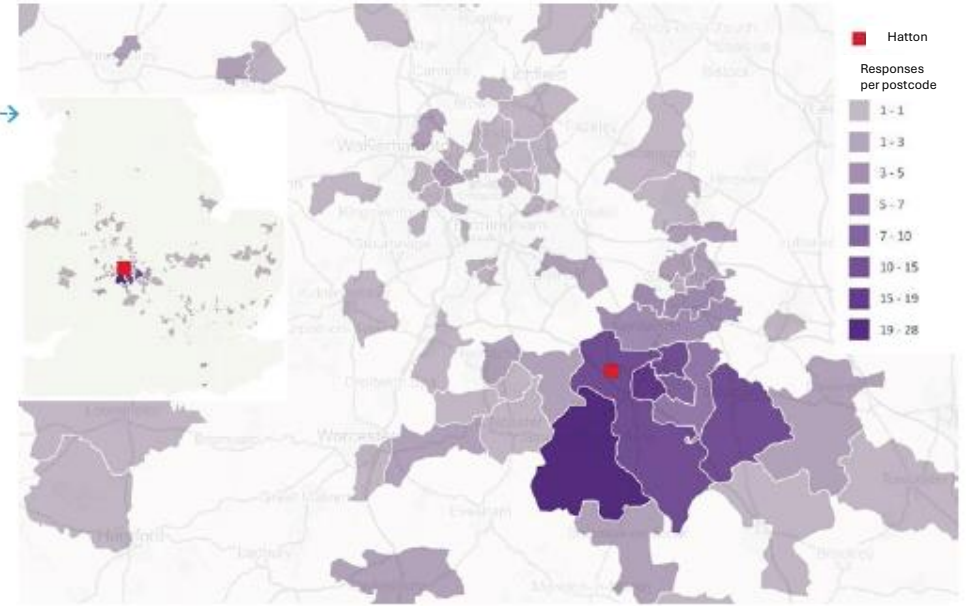
390 Responses

Geographical catchment of responses

*384-person sample required for statistical significance

65% 'yes'

Living status of responses

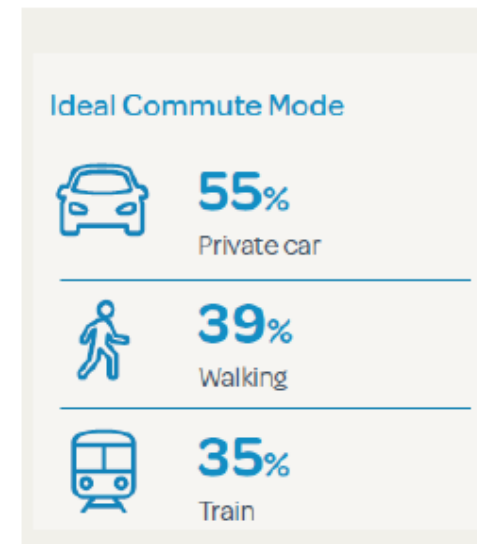
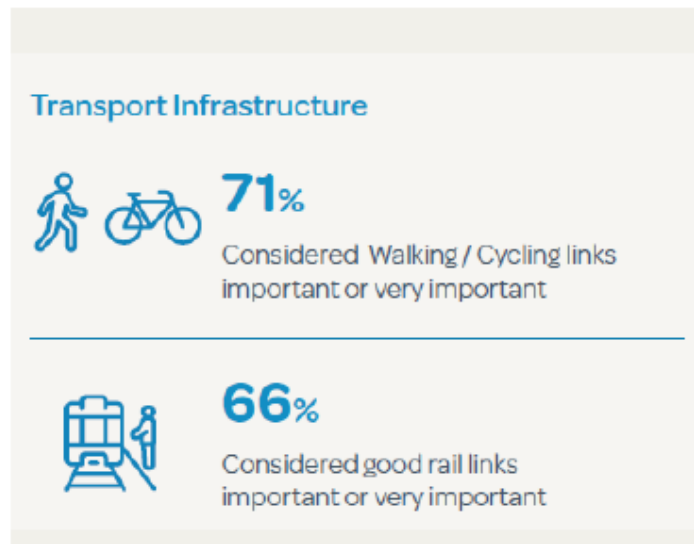


Would you support the creation of a new settlement with sustainable infrastructure in South Warwickshire?

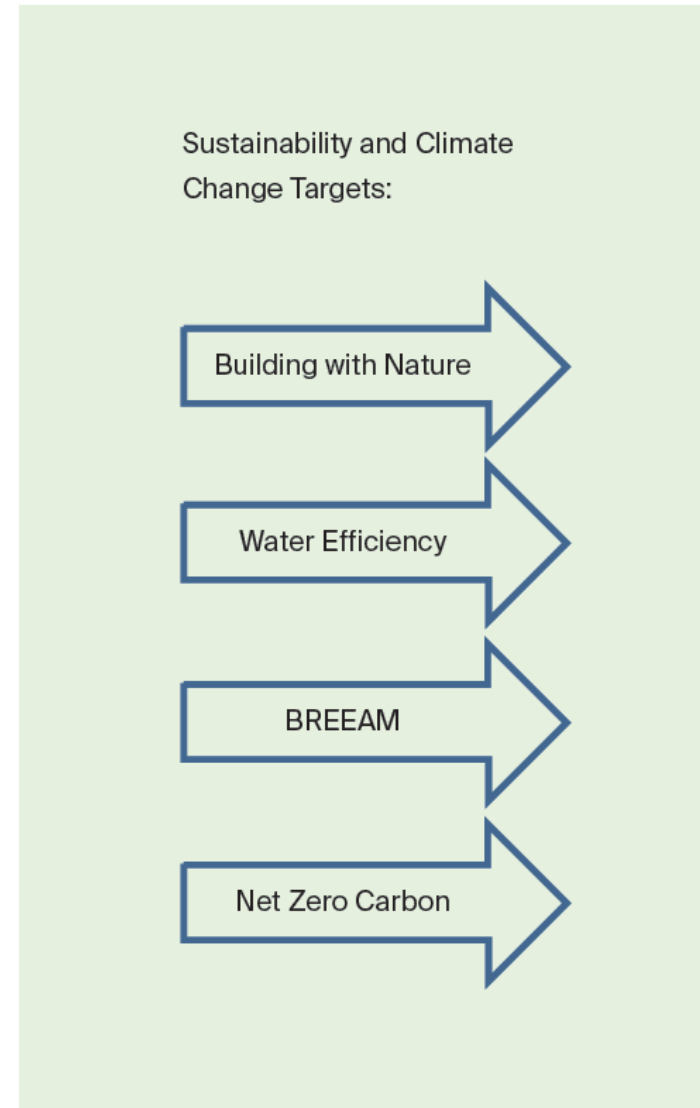
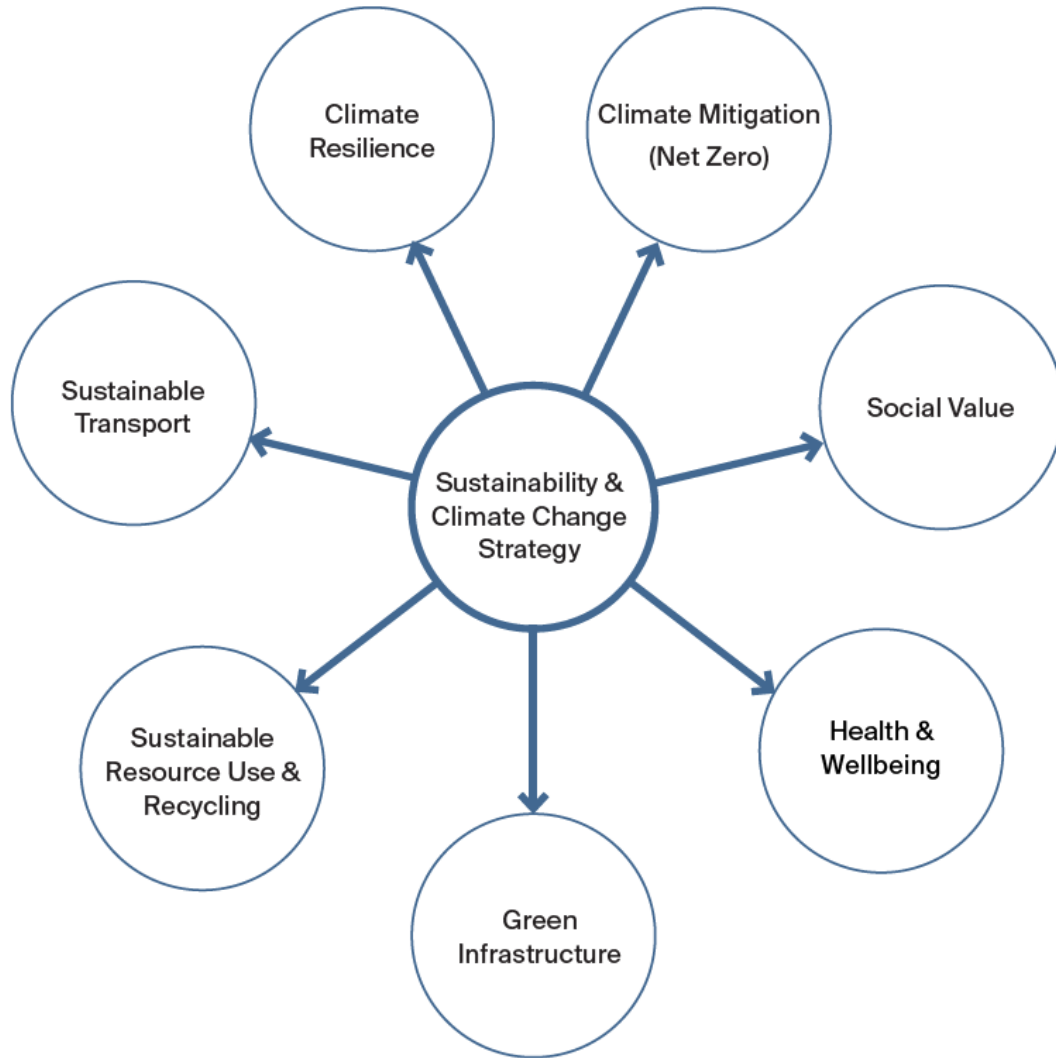
63% agree or strongly agree



Insight-led Masterplan Design



Truly Sustainable New Villages



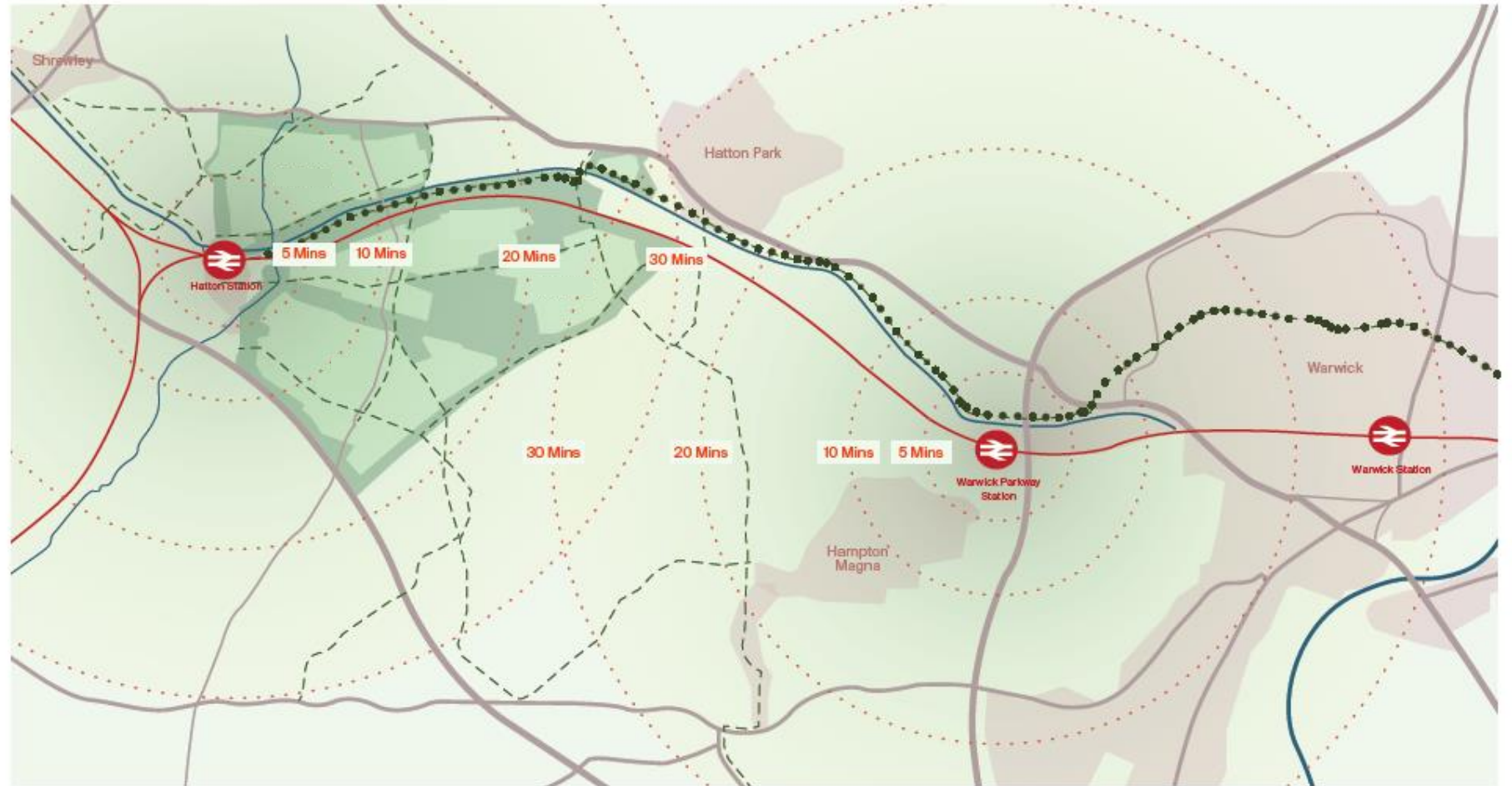
Designing for Net Zero in the 2030's

	Policy Requirement Today	Proposed Strategy for Hatton (2030 - 2035)	Proposed Strategy for Hatton (2035-)
Net Zero Definition	Net Zero Operation	Net Zero Operation	Full Net Zero
Operational Emissions	WDC's Net Zero DPD Policy	WDC's Net Zero DPD Policy	Net Zero Carbon Building Standard / PassivHaus Standard
Operational Energy	N/A	RIBA 2030	
Domestic Space Heating Demand	N/A	Below 20 kWh/m ² /y	
Embodied Carbon	- Whole Life Carbon Assessment for major developments - 'Assess and reduce' embodied carbon	RIBA 2030	
Solar PV	FHS Option 1 - Yes FHS Option 2 - No	Yes	Yes
Passive Design	Optimising orientation and form for natural daylight, solar gains, minimising overheating and maximising energy generation through Solar PV Where possible development blocks will be designed to facilitate maximising south facing roof areas		

Hatton: A well-connected place

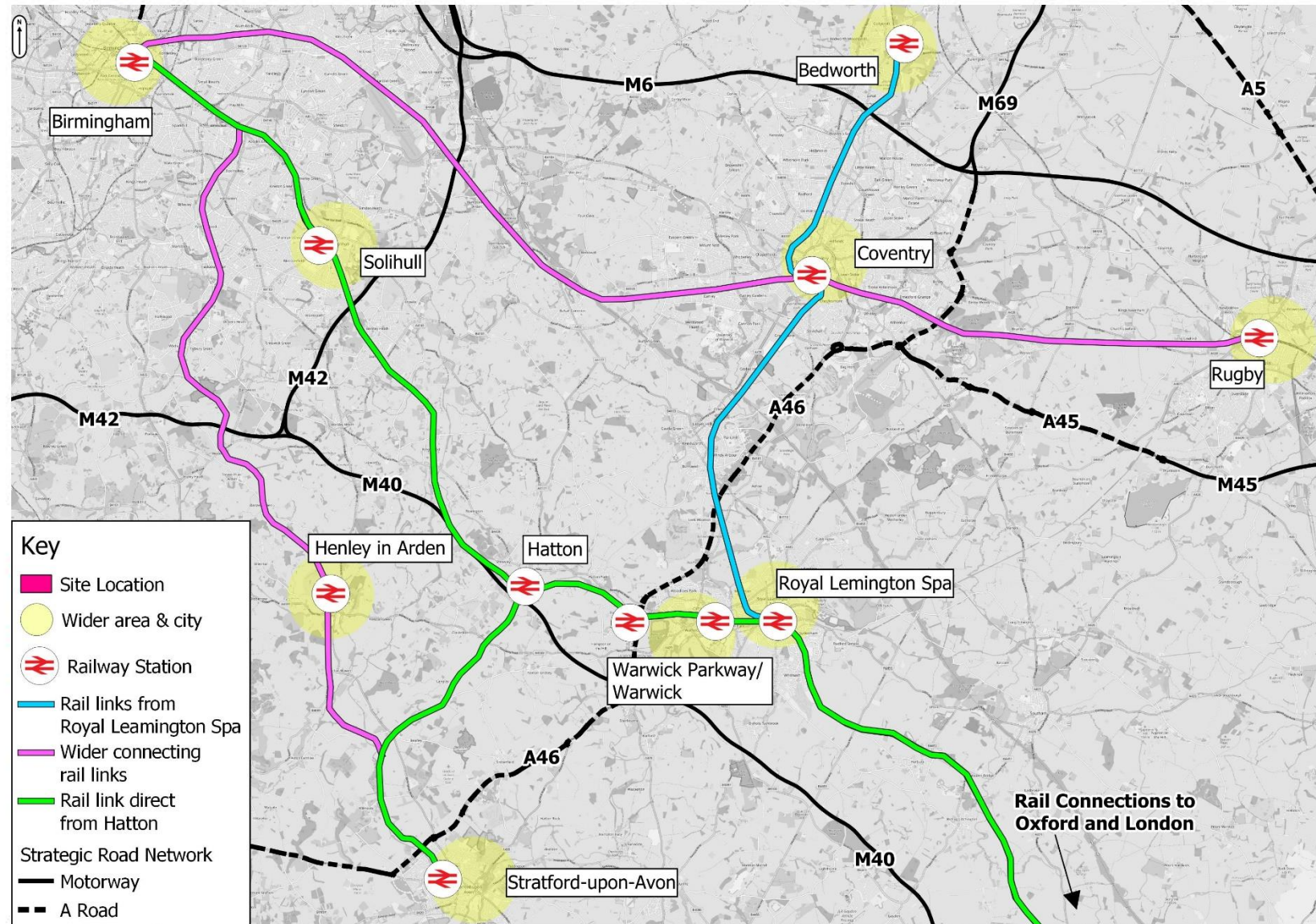
Work in Progress, July 24

- 3 villages within 30min walk of Hatton Station
- East of site extent within 30 minute walk of Warwick Parkway Station
- Centres located with each village to encourage pedestrian and cycle movement
- Primary cycle and pedestrian connection from Hatton Station, through Canal Park to Warwick



- Cycle and pedestrian connection to Warwick
- Walking Catchment Zones (as the crow fly)
- Railway Line
- Railway Station
- Active Travel Links
- Canal
- Vehicular Routes
- Surrounding Development
- Hatton Villages Masterplan
- Neighbourhood Areas within Masterplan

Hatton Villages Wider Connections:



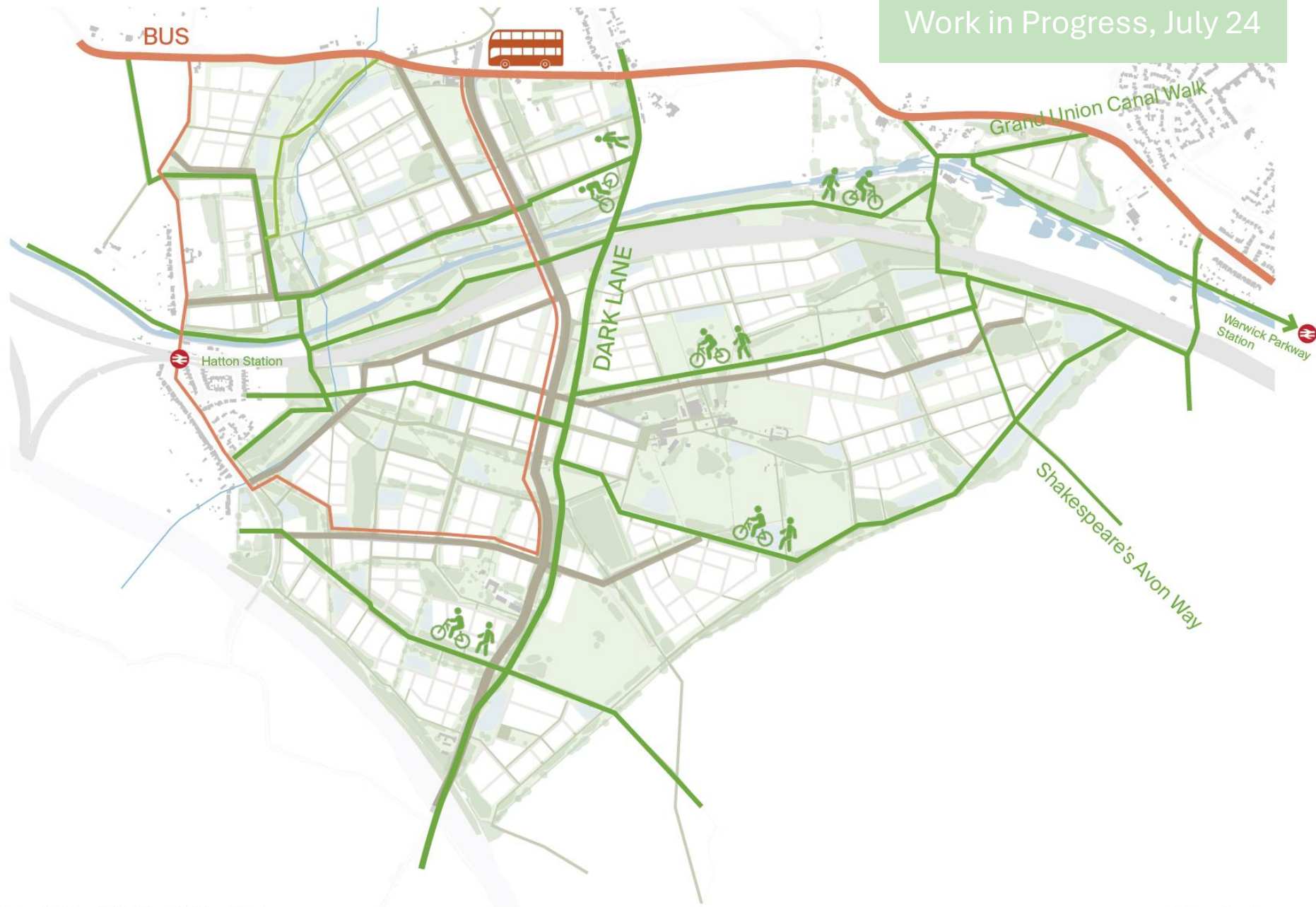
- 1. Work with the landscape
- 2. Prioritise people over cars
- 3. Characterful places
- 4. Sociable centres
- 5. Compact not sprawl



1. Work with the landscape

2. Prioritise people over cars

- New 'Dark Lane' north/south vehicular connection with new bridge
- Minimise impact on surrounding road network
- Bus connection through site from Hockley Road



Green Belt Compensation

Work in Progress, July 24

