

Parish Diary

December

2nd 5pm	Lantern Walk	See inside for details
2nd 5.30pm	Christmas Carols	Community Centre
2nd 6.30pm	Christmas tree lights switched on	At the Monty
5th at 8.00pm	Parish Council Meeting	Village Hall
5th 3-5pm	Christmas Moments	Open Door
Every Wednesday 10.30am to 12pm	Weekly Coffee Morning	Cawston House
Every Wednesday at 11am	'Ramblers Walking For Health' walks around village approx 1 hour	The Open Door
12th at 7.30pm	W.I. "Batty About Bats!" Speaker Jon Russ	St Michael's Church Hall New members welcome call Anne Foster 01926 492837
19th 10.30am	Over 60s Coffee Morning	Village Hall
26th 11am	Boxing Day Walk - 'Ramblers Walking For Health' Weather permitting	meet outside the Monty
27th 2pm	Games afternoon	Community Centre
31st 8pm	New Years Eve - Games and sing-a-long - bring and share	Community Centre

January

2nd at 8.00pm	Parish Council Meeting	Community Centre
Every Wednesday 10.30am to 12pm	Weekly Coffee Morning	Cawston House
Every Wednesday at 11am	'Ramblers Walking For Health' walks around village approx 1 hour	The Open Door
9th 3-5pm	New Year Moments	The Open Door
12th 7pm	New Years Supper with Pen & Den	Community Centre

Entries here in this *diary* are free to local groups

The deadline for the next issue is 20th of the month
The Newsletter is Published by Budbrooke Parish Council
All enquiries to Ian Broadbridge 0121-516-0240
Or e-mail: newsletter@budbrookepc.org.uk

The publication of an advertisement in this newsletter does not constitute a recommendation. Submitting content is not a guarantee of inclusion. Content and articles submitted may be edited and/or altered without notification Content including articles, stories and adverts are the opinion of the original author and not necessarily Budbrooke Parish Council.



December
2018

Budbrooke Parish Council Newsletter



follow us on Facebook @BudbrookePC

Copies of the site plans for both the developments are in the two Parish Council notice boards and the Open Door window.



Website: www.budbrookepc.org.uk
Email: newsletter@budbrookepc.org.uk

Meetings are on the first Wednesday of every month, see Parish Diary on the back for venues, and are open to the public. Agendas are posted on the Notice boards 6 days earlier. Minutes printed here are un-confirmed.

Written communication to:-

Simone Bush, 17 Hicks Close, Warwick, CV34 5ND.

Email: clerk@budbrookepc.org.uk

Phone: 07708 177206

Parish Councillors

David Bryan (Vice Chairman) 495648

Mike Dutton (Chairman) 493985

Ann Robey 494863

Frank Roper 493941

Maggie Treacy 07753 677712

Kate Dutton 493985

Rhonda Hales 07702 074461

Carol Roper 493941

Dave Shirley 715092

Want to hire a room?

Community Centre

Hannah Gelfs 07825 154286

Village Hall

Linda 402404

St Michaels Church Hall

Church office 407020.

Budbrooke Charities

For information contact

Mrs Kate Dutton, Clerk

01926 493985

budbrookecharities@gmail.com

Or see the website

www.budbrookepc.org.uk

THE place to meet...

THE place to eat...

Your community café

3 Slade Hill, Hampton Magna

www.opendoorcafe.org.uk

01926 410446



Parish of Saint Charles Borromeo,

Mass – Sunday 9am

other days see newsletter

Parish Priest: Fr Patrick Mileham

Parish Tel No: 01926-429913

www.stcharles-borromeo.org.uk

Groups at Budbrooke Community Centre, Hampton Magna

Group	Contact details	Day	Time
Hampton Magna Pre-School	Katrina Jakeway 07840179493	Monday, Wednesday, Thursday, Friday	9.00am – 3.30pm 9.00am – 1.00pm
Turning Pointe Dance School	Gail Turner 07813039636	Monday, Friday, Saturday	4.15pm/5.30pm – 8.30pm 9.00am – 3.30pm
Hampton Magna Tots	Julia Smith 07506713277	Tuesday	9.30am – 11.20am
Pilates by Ju	Julieann 07813182119	Tuesday	6.15pm – 9.15pm
Hampton Magna Brownies	Jo Cook 07961856010	Wednesday	6.15pm – 7.45pm
Hampton Magna Scouts	Scouts@1sthamptonmagna-scouts.org.uk gs@1sthamptonmagna-scouts.org.uk	Thursday	7.00pm-9.00pm

Have you registered to receive updates from the
Budbrooke Parish Council Website?

www.budbrookepc.org.uk

2 newsletter@budbrookepc.org.uk

To hire the community centre, please contact Hannah Gelfs
on 07825 154286

27 www.budbrookepc.org.uk

Groups at Budbrooke Village Hall, Hampton on the Hill

Group	Contact Details	Day	Time
Art Class	Derek Mildenstein 01926 495393	Monday	1.30pm – 3.30pm
Pilates	Kimberley Warwick 07843 570936 kwarwick@hotmail.co.uk	Tuesday	9.30am – 11.30am
West Coast Swing Dance Class	Stu Bassie 07970261841	Wednesday	8pm to 11pm
Milverton Folk Dance Group (no experience necessary)	Julie Dent 07866961967	Thursday	8.00pm – 10.00pm
RVS Over 60's	Maureen Marshall 01926 498467	Third Wednesday of the month	10.00am – 12 noon
NCT - Signature Antenatal Classes	nct.org.uk/signature	Monthly	

To hire the village hall, please contact Linda White on 01926 402404

Minutes of Budbrooke Parish Council Meeting held on Wednesday 7th November 2018 at Budbrooke Community Centre

BCA – Budbrooke Community Association FB - Facebook HA – Highways Authority HOTH – Hampton on the Hill HOTHRA – Hampton on the Hill Residents' Association NALC – National Association of Local Councils NP - Neighbourhood Plan NW - Neighbourhood Watch/ PC – Parish Council BBCC - Budbrooke Community Centre	PCSO – Police Community Support Officer SLCC – Society of Local Council Clerks WALC – Warwickshire Association of Local Councils WCC – Warwickshire County Council WDC – Warwick District Council WRCC – Warwickshire Rural Community Council WRWCF – Warwick Rural West Community Forum BBVH - Budbrooke Village Hall
--	---

These are unconfirmed minutes. Confirmed minutes are available on the website shortly after the following meeting.

Present: Chairman Cllr M Dutton, Cllrs Mrs K Dutton, Mrs A Robey, R Hales, D Shirley, M Treacy, WCC Cllr L Caborn

PUBLIC COMMENTS: 12 members of the public. Items reported include overhanging hedges at end of Daly Avenue obscuring vision & need cutting back by the corner of Damson Road / Chichester Lane. Daly Avenue also has overhanging bushes over pathway where new entrance would be on proposed development. Also along pathway as come along School Lane HOTH along right hand side towards Henley Road are also encroaching onto the pathway. Concerns raised regarding Bus Service announcement that it may cease. Tarmac paths in general need of repair, repair programme is in place. Site maps for the new development discussed, plans will be displayed in the Parish. Rumours that Aldi were coming to the Parish - PC are unaware of any such plans.

DECLARATIONS OF INTEREST & DISPENSATIONS: none received.

APOLOGIES & ACCEPTANCE OF REASONS FOR ABSENCE: WDC Cllrs P Phillips & A Rhead, Cllr Bryan, Cllr F Roper, Cllr Mrs C Roper

MINUTES OF PREVIOUS MEETING: Resolved October minutes true & accurate.

POLICE MATTERS / WRW COMMUNITY FORUM ISSUES: nothing to raise.
PLAYGROUNDS: PC noted monthly playground report. Montgomery Avenue Information Board working party reported design, content & location has been agreed, approx costs of £60 to print A3 map then cost of wooden framework, final wording to be agreed and costs sought.
MATTERS ARISING: Grit Bins - prices considered, agreed larger size approx £85. Clerk to seek advice from County Highways to determine suggested location at bottom of Mayne Close by steps and footpath is acceptable & bring back to PC.
Memorial Bench update - bench being fitted tomorrow. Thanks to Cllr Treacy for intermediate fence repairs by the memorial, Clerk to contact landowners.

CORRESPONDENCE:

VASA funding request - discussed & considered, PC unable to help.
Introduction to Warwick Area Parish Champion noted.
Stagecoach re Bus service: Chairman had submitted request to continue funding the service with local section 106 agreement funds due to development proposals. Discussion and alternatives discussed.
ShoppaHoppa & Hospital transport scheme details to be put into the newsletter. Chairman suggested a survey in the newsletter re. potential use.
WDC Council Tax reduction scheme consultation noted.
Resident interest and offer to help re. Possible HM allotments noted.
Correspondence re. CIL monies noted & responded.
WALC area committee meeting noted.
PARISH MAINTENANCE: General roads and pathway state of repair.
Clerk to request Highways to look at visibility on green area outside top of Old School Lane HOTH. Along Woodway opposite back entrance of Riding stables before doing down the dip flytipping & litter items reported.

MATTERS PERTAINING TO OUTSIDE BODIES (CC/VH/OTHER)

1 Community Centre: WW1 commemoration events on 11th November 4-6.30pm.



KEEPING YOU COOL
Vehicle Air-Conditioning Servicing

MOTORCLIMATE UK
VEHICLE AIR CONDITIONING SPECIALIST

COMPRESSOR tech
Manufactured Automotive Compressors

www.motorclimate.co.uk

www.compressortech.co.uk

**No. 2 BUDBROOKE POINT, BUDBROOKE INDUSTRIAL ESTATE,
BUDBROOKE ROAD, WARWICK CV34 6XH
Tel: 01926 353111**

2019

Don't forget to get your
diary dates in.

The deadline for each issue is
20th of the month

E-mail:



**Simons
Systems**

Available for all your computer requirements including:
PC's & Laptops, New & used systems, Repairs & upgrades
Virus/Malware Removal, Data back & Windows re-installation
Upgrading memory/Hard drives/Rom drives/Graphics, etc
Internet - modems fitted, wireless, networking.
Any repairs or computer problems. **No call out charge**

T: 01926 316 119 E: sales@simons-systems.co.uk
M: 07751 811 097 W: www.simons-systems.co.uk

2 Village Hall: Skittles night 27/10 successful with £200 profit for VH. Commemoration lunch on Sunday. Next film night Friday 14/12 - Deck the Halls with mulled wine and mince pies £5 per ticket.

3. Telephone Box HOTH - has been cleaned down, flaky paint will be removed shortly ahead of repaint. Some panes of glass need replacing - Cllr Hales will circulate quotes for toughened glass and replacement signage at the top.

Cllr Caborn reported the new structure at WCC, Monical Fogarty appointed MD and Chief Executive with 3 Senior mgrs. Director of Public Health and Director of Education both also retiring. Policies and theories will now run separately to services & three directorates will be in operation: Resources, Commissioning (social care & public health), Community services (highways, education, Fire and Rescue) which will bring a more efficient use of resources. Interims are in post pending recruitment, changes will take effect from 1st April 2019.

PLANNING MATTERS

Noted various items of correspondence received from residents in advance of planning application W18/1811 and also H28.

Noted planning appeal Church Farm, Church Lane, Budbrooke, Warwick, CV35 8QL for Listed Building Consent for the proposed erection of a first floor extension to residential barn conversion

Clerk to request planning investigate a new fence erected at a property in the parish as the height is causing a visual obstruction.

HOTH Traffic concerns & proposals received from HOTHRA: Chairman reported following analysis of results that the throughput of traffic & speed has increased at the far end. Chairman to send his analysis and report to Cllr Caborn for consideration & also place on website. Cllr Caborn reported there is no funding available presently as there are many other higher risk areas which are priority. WCC budget allocation for dropped kerbs. Mobile speed van & gun discussed. Suggested newsletter article to ask residents to volunteer to use speed gun scheme. Suggested also this is taken to Community Forum for discussion. Chairman reported PC used to paint the stone white on the green at the

top of Old School Lane to assist with kerb visibility- Cllr Treacy to repaint the stone.

PC considered below applications received & results & noted associated correspondence from residents.

W18/1811 Land South of Lloyd Close - Outline application with all matters reserved except for access, for the erection of up to 131 dwellings together with vehicular/pedestrian access from Daly Avenue with either an emergency or vehicular (and pedestrian) access from Mayne Close; Green Infrastructure including a play area, other open space and landscaping; sustainable drainage; and other related infrastructure - Chairman to circulate response for Member approval to be submitted asap.

W18/1885 20 Hatton Terrace B'Ham Road Two storey front extension and first floor rear/side extension

PC has no objections.

Results:

W18/1560 22 Cherry Lane - Proposed first floor rear extension and single storey front extension - Granted

W18/1674 Rose Cottage, Henley Rd, HOTH Single storey rear extension - Granted

REVIEW OF COMPLAINTS PROCEDURE

To consider guidance from WALC re. Appeal process and approve complaints procedure. Defer to December or January meeting.

STANDING ORDERS/FINANCE REGULATIONS/RISK ASSESSMENT

PC considered recommendation from Finance Sub-Cttee & resolved to accept above with no alterations.

NEWSLETTER & WEBSITE

Repeat article re. overhanging trees & add that WCC have right to assess and action if needed then charge residents if there is no response to requests.

Website proposals were considered, resolved quotation accepted but request prior consultation with Chairman & Cllr Hales.



Your LOCAL kitchen specialist!

Ever thought of a kitchen or bedroom facelift? You keep the existing layout and cabinets but update it by simply replacing the existing doors, drawers, handles and perhaps work surfaces. You achieve all the benefits of a new kitchen but at a much lower cost and certainly without half the stress and inconvenience. Wasted corners can be transformed and become accessible and with so many interior fittings now available, who knows what can be achieved!

The appliances and sink are old and past their best, no problem, I have full access to a whole range of leading brands AND at competitive prices.

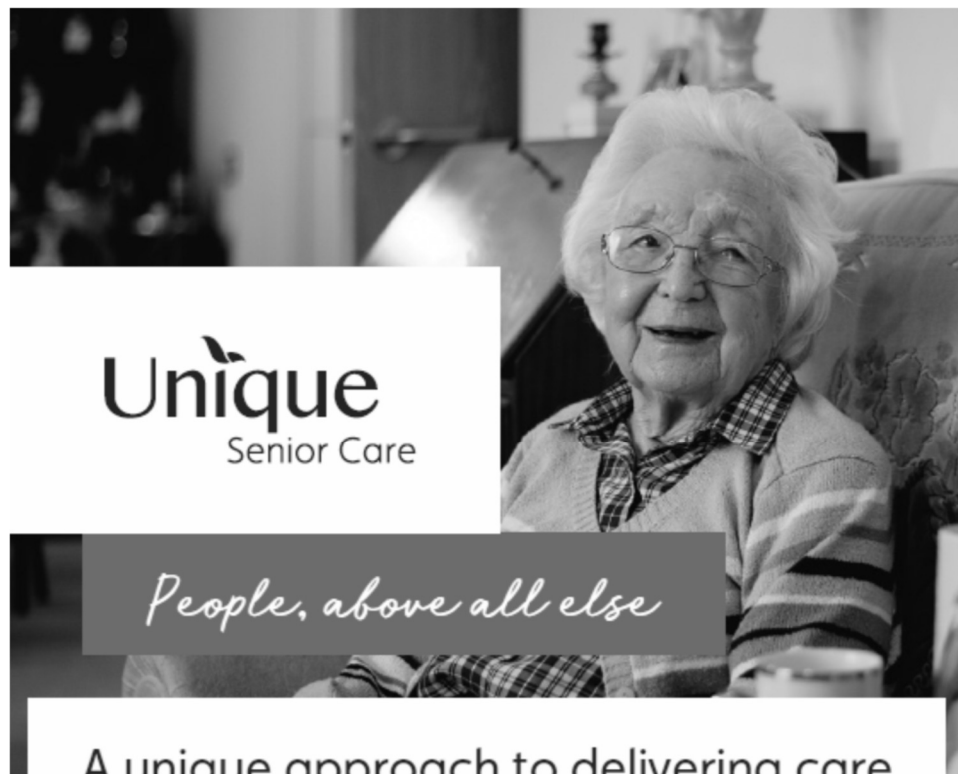


My "made to measure" facelift service transforms your room quickly with a minimum of fuss, no matter how old or if the sizes are not standard. I offer dozens of different designs, styles, finishes and colours, fully made to measure to suit your cabinets.

Should you wish to start again from scratch, I design, supply and install kitchens using the Crown Imperial and Crown Lifestyle ranges, Britain's longest established kitchen manufacturer.

Call me **NOW** or visit my excellent website to discover how **County Kitchens and Bedrooms** can help you have the **DREAM**, but without the **NIGHTMARE**.

County Kitchens and Bedrooms
3, Cherry Lane, Hampton Magna, Warwick, Warwickshire, CV35 8SL
Telephone/Fax: 01926-494980, Mobile 0789-665-9124. E-Mail: steven.p@btclick.com
www.countykitchensandbedrooms.co.uk
VAT Reg. No. 589 3593 73



Unique
Senior Care

People, above all else

A unique approach to delivering care

Unique Senior Care provides outstanding home care services to older people in their own homes, where they are most happy and comfortable.

To speak to a team member, please visit
www.uniquecare.co.uk or contact us at:
Coventry **02476 616262**
Stratford upon Avon **01789 204040**
Warwick **01926 629030**

FINANCIAL INFORMATION

Noted payment below made to Clerk to purchase Projector from Argos - £100 of the cost to be reimbursed by WDC. Receipts will be submitted.

PC considered and noted Finance Sub Cttee's consideration and approval of PC accounts & acceptance of findings of successful external audit.

Item deferred: to consider responses to CIL questionnaire.

Resolved PC approve funding request for WW1 commemoration event:

Chairman reported PC will also need to pay for the gas, approved

PC noted accounts reconciliation & authorised payment of the accounts listed below, Chairman signed payment authorisation sheet:

Emergency payment between Mtgs

Memorial Bench Memorial benches £503.99

Meeting items

Clerk October Simone Bush £497.68

October PAYE HMRC £121

Projector Argos / Clerk £283.94

Meeting room Hire 23/10/18 The Open Door £30

Chairman's allowance Cllr Mike Dutton £225

Funding request WW1 event Commemoration Group £150

Half yearly ground rent WDC £500

Aug, Oct & November newsletter Think Design & Print £900

Defib signage Andy Allsopp £21.65

Quarterly newsletter payment MI Business Services £87.5

Phone box supplies reimbursement Cllr R Hales £15.96

October parish maintenance Phoenix Contracting £1305

TOTAL £4641.72

MATTERS FOR INCLUSION ON NEXT AGENDA: Solar light at barracks memorial - Cllr Hales to obtain quotes.

DATE OF NEXT MEETING: Wednesday 5th December 2018 at 8pm at BVH.

Councillors are reminded of their duty to consider all aspects of equal opportunities, crime prevention, unlawful discrimination, biodiversity of the natural habitat and other best practices when making decisions at the Meeting.

Arras Boulevard and Daly Avenue

The Parish Council is responding to the planning applications at both Arras Boulevard and Daly Avenue and the full text can be found on our website.

Volunteers Needed

The Parish Council are looking for volunteers to assist with speed gun use at HOTH.

Please email the Clerk if you would be interested.

Full training will be given.

clerk@budbrookepc.org.uk

Dog Fouling issues

To report problems contact
WDC Dog Warden direct on:

01926 456734

Email: contactus@warwickdc.gov.uk

This can also be done online at
www.warwickdc.gov.uk/forms/form/46/report_dogs_fouling



O P R I N L I G G Q Q R G L U N H Z E F
C H Z Q E J A O R E I N D E E R I R L Q
M B M O L S Z T V W U P O B N D T T V V
N H N J O L L Y N U Y E N M I H C C E U
X P M N P P S F I A G K A C L Y V H S Z
D L A E H X C E L B S F P G C E T Q E G
Z O M N T H E D A Y S G N I T E E R G M
S D Z I R V T Q P S G S B W C C P W V Q
P U I Z O V A J A E O R U A C F S O G S
G R E H N X R L B P Y N N N H R S O I L
B N Z C S T B H J O M D P I M O A B V M
Y M I S T L E T O E Y R D E E S M C I U
G O C N O R L D K C O Q O N R T T W N B
W K Y Q C Z E J A G O V T D R Y S D G Q
L O R T K L C N I C G P N R Y L I N X S
J N X J I R E F B A V A P J E H R D C Z
X L W O N H T A E R W V I I L E H A Y E
W L R D G Z G Y L D J C G N X E C M B O
M Y A D I L O H L S U H J A W N Z A M J
I X P D B T V H S K M W S E L D N A C U

BELLS	RUDOLPH	ELVES	JOY
CANDLES	SANTA	FROSTY	MERRY
CANDY CANE	SEASON	GIFT	MISTLETOE
CARDS	SLEIGH	GIVING	NOEL
CELEBRATE	STOCKING	GREETINGS	NORTH POLE
CHIMNEY	TREE	HOLIDAY	REINDEER
CHRISTMAS	WREATH	JOLLY	

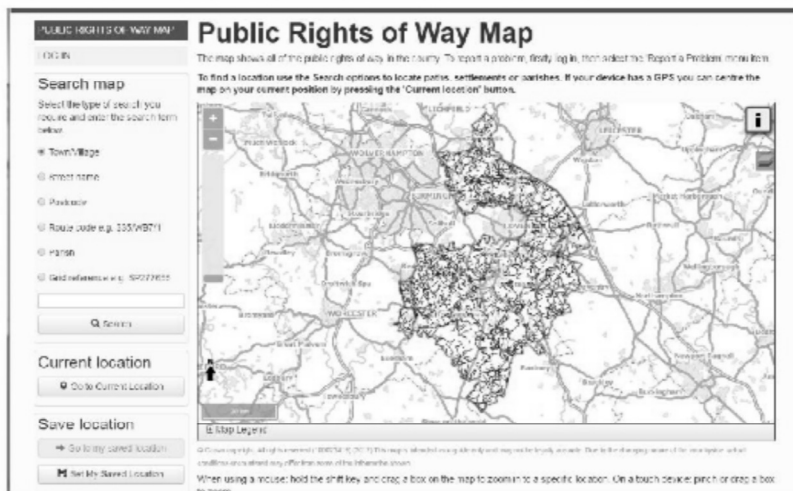


© 2017 Happiness is Homemade (www.happinessishomemade.com) FOR PERSONAL USE ONLY!

Warwickshire Rights of Way Team announce a new online Fault Report system

This is a new way to report Rights of Way faults direct to our Team. It requires the user to log into the system as the members of Rights of Way Team do. This map based system allows users to mark the location of the fault on the map and then to give a detailed description of the fault and its location. There is a search facility which has various options to get to an approximate location for example a town or village, a grid reference, Post code etc. The map depicts all the Rights of Way in the County and users are able to zoom in and out in order to pinpoint the location of the fault. Once the spot is plotted on the map the detailed information of the problem and location can be added together with photographs (if available). The system will acknowledge the report by email giving a unique reference number by which the report can be tracked. Should the user wish to give further details or photographs at any time they can add to the original report themselves. The information is processed and automatically transfers into the main Rights of Way system. This system ensures that all contacts and reports are included on the system and will help to improve our efficiency.

Link to new online reporting system: www.warwickshire.gov.uk/rowreporting



*Working for
Warwickshire*

Overhanging Hedges & Branches

If your property has branches or hedges overhanging onto public footpaths / areas this is causing an obstruction and potential safety hazards.

Could residents please take action to address this as a matter of urgency.

WCC Highways Dept have the right to trim back overhanging branches and charge costs to the landowner

Defibrillator Locations

There are currently 2 defibrillators in the parish located at:-

Village Hall, School Lane Hampton on the Hill
and
Community Centre Field Barn Rd,
Hampton Magna

WARWICKSHIRE

HEALTH TRANSPORT



**Do you,
or someone you
know, need support
to get to a medical
appointment?**

**To find out all your
options, don't delay,
call today on:**

01926 412300

Or visit the website:

**[www.warwickshire.gov.uk/
healthtransport](http://www.warwickshire.gov.uk/healthtransport)**



December Opening:

Monday – Friday 0800-1200

(We close for Christmas Holidays on Dec 21st)

**Did you know that The Open Door is
available to book outside of regular
opening hours for groups and
private usage? For more information
please telephone 01926 407020**



Budbrooke Community Centre Fundraising Events 2019

12th January – New Years Supper with Pen & Den

9th February – Games Evening - Doors open 7pm for 7.30pm start
£6 per person including supper

16th March – Quiz Night - 7 for 7.30pm start. Teams up to 6 - £6
per person including supper

24th March – Easter Bingo - Doors open 7pm for 7.30pm start

18th May – Village Barn Dance – 7 pm for 7.30pm start £10per
person.

7th & 8th September – Parish show

21st & 22nd September – Scarecrow Trail

27th September – Macmillan Coffee afternoon – Open Door 2-4pm

12th October – Autumn Quiz - 7 for 7.30pm start. Teams up to 6 -
£6 per person including supper

25th October – Halloween Crafts and fun – Fancy dress 5 – 6.30pm

24th November – Prize Bingo Doors open 7pm for 7.30pm start

1st December – Lantern walk and Christmas celebration 5pm

27th December – Games afternoon from 2pm

31st December – New Year's Eve games, songs and celebrations

More details on events check out our website
www.budbrookecommunitycentre.co.uk

Shoppa-Hoppa

Leamington / Warwick

People living within these areas are able to use the service which goes to supermarkets
near Leamington Shopping Park

Monday

Aylesford
Barford
Bishops Tachbrook
Budbrooke
Emscote
Hampton Magna
Hampton on the Hill
Hatton
Heathcote
Myton
Norton Lindsey
Saltisford
Sherbourne
Warwick Town
Wasperton
Woodloes
Ring Monday to Thursday to book



Booking Line

01789 471595

Open 9am – 4pm

Wednesday

Brunswick
Cubbington
Eathorpe
Milverton
Newbold
Offchurch
Radford Semele
Sydenham
Wappenbury
Weston under Wetherly
Whitnash
Ring Wednesday to Monday to book

200 Club



November

£30. Hayes. Field Barn Road
£20. Bilson. Bellam Road
£10. Wheal. Cherry Lane

December

£30. Hunt Arras Bvd
£20. Morris. Seymour Close
£10. Cross. Cherry Lane

Warwick Building Services

Your Local builder established over 25 years
www.warwickbuildingservices.co.uk

01926 492122

07970948235

All Aspects of the Building Trade Covered
Based in Hampton Magna

- Roof Repairs
- Chimneys Pointed
- Gutters Cleaned
- Fitted kitchens
- Windows Repaired
- New Windows
- New Doors
- Carpentry
- Plastering
- Alterations
- Extensions
- Brick Work
- Fencing
- Plumbing
- Bathrooms
- No Job too Small

Contact Robert Middleton for a prompt professional service
Local references available



Lantern Walk & Christmas Celebration

Sunday 2nd December 5pm

Start the community spirit for Christmas with carols, mince pies, mulled wine & surprises!

5pm – Christmas Carol walks to the Community Centre with lanterns starting off at Damson Road junction with Cherry Lane – guides Caroline & Michael Edwards and Arras Boulevard junction with Clinton Avenue – guides Richard Lytle, Sue & Dave Shirley. (Both walks weather permitting)

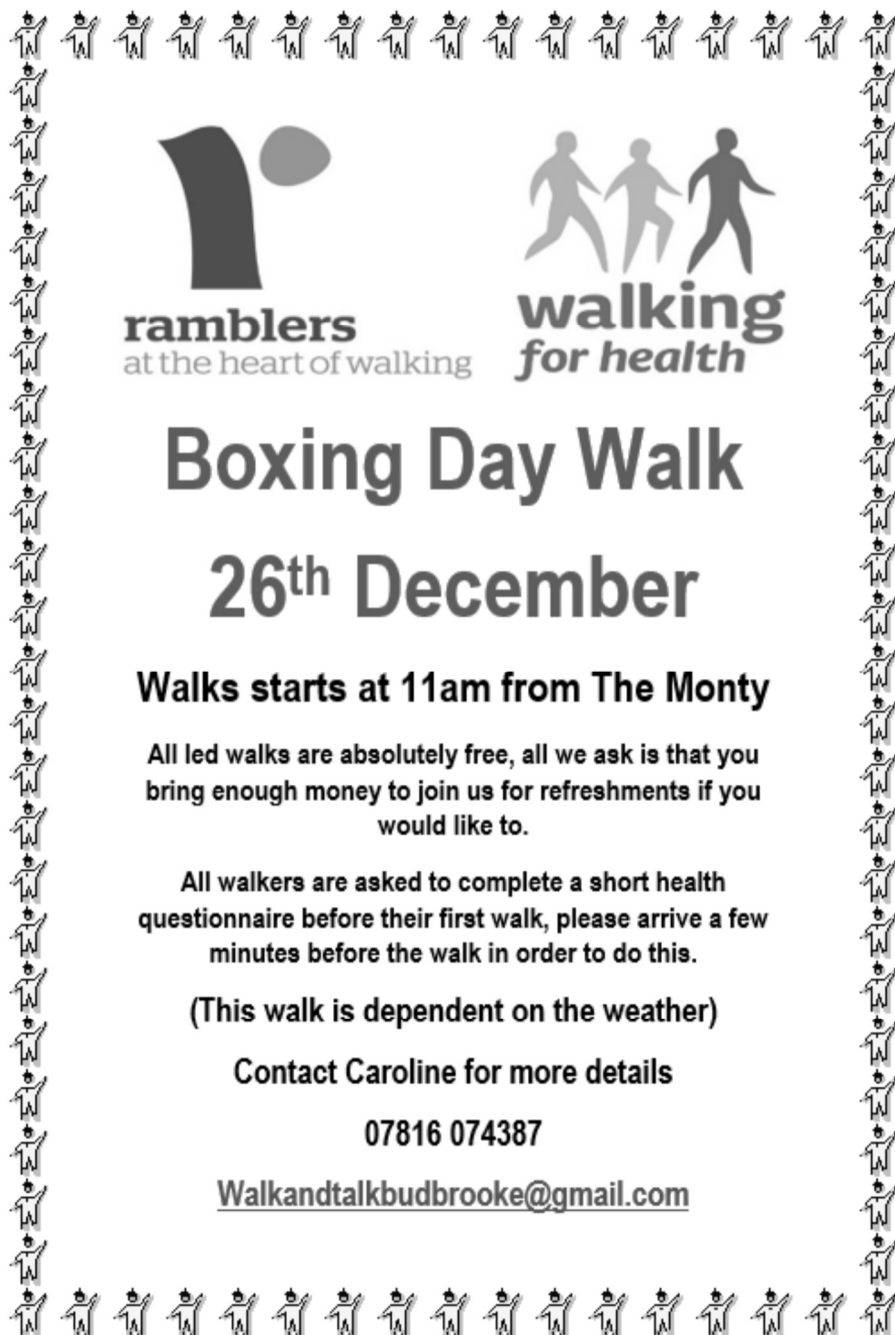


5.30pm Community Centre – Christmas Carols, mince pies and mulled wine (soft drinks available)

6.30pm Christmas tree lights switched on at the Monty.
Don't forget your decoration for the tree!

A warm welcome and community event for everyone





Boxing Day Walk

26th December

Walks starts at 11am from The Monty

All led walks are absolutely free, all we ask is that you bring enough money to join us for refreshments if you would like to.

All walkers are asked to complete a short health questionnaire before their first walk, please arrive a few minutes before the walk in order to do this.

(This walk is dependent on the weather)

Contact Caroline for more details

07816 074387

Walkandtalkbudbrooke@gmail.com



Website Design (pricing for all budgets)

SEO for your website

Data Supply

Lead Generation

Telemarketing (one off and ongoing)

Marketing Strategy

Database Management & design

Direct Mail Campaigns

**Phone 0121-516-0240 — Email info@mibsl.co.uk
www.mibsl.co.uk**

Your refuse and recycling collections will change over Christmas

There will be no refuse or recycling collections on Christmas Day, Boxing Day or New Year's Day. All collections will be affected by the following changes:

Normal collection date		New collection date over Christmas
Mon 24 Dec 2018	→	Sat 22 Dec 2018
Tue 25 Dec 2018	→	Mon 24 Dec 2018
Wed 26 Dec 2018	→	Thurs 27 Dec 2018
Thurs 27 Dec 2018	→	Fri 28 Dec 2018
Fri 28 Dec 2018	→	Sat 29 Dec 2018
Mon 31 Dec 2018	→	No Change
Tue 1 Jan 2019	→	Wed 2 Jan 2019
Wed 2 Jan 2019	→	Thurs 3 Jan 2019
Thurs 3 Jan 2019	→	Fri 4 Jan 2019
Fri 4 Jan 2019	→	Sat 5 Jan 2019

Please ensure your bins, boxes and bags are presented at the edge of your property by 7am on your amended collection day.

Normal collections will resume on Monday 7th January 2019.

Recycling wrapping paper and Christmas cards

Recycle wrapping paper and Christmas cards with your cardboard. We cannot recycle foil wrapping paper, glittery wrapping paper, glittery cards, ribbons, bows and tape.

What to do with extra recycling over Christmas?

Put extra recycling in a sturdy bag or small box (please keep each material separate) and place beside your red boxes and bags. Please flatten or cut large cardboard into pieces no larger than 1m x 1m.

Christmas tree recycling

Please cut your real Christmas tree into pieces and put it in your green bin for collection throughout January 2019. Make sure all decorations, tree stands, pots and netting are removed.

If you don't have a green bin please take your tree to Princes Drive Recycling Centre in Leamington Spa or Cherry Orchard Recycling Centre in Kenilworth.

Check your collection changes online

warwickdc.gov.uk/christmasrecycling



Games Afternoon

Join us for fun and games on Thursday 27th
December at Budbrooke Community Centre
from 2pm

Bring along your favourite game and a few
nibbles to share and join in the fun.

The children have had their fun now it's time
for you to enjoy yours!

Donations welcomed towards Budbrooke
Community Centre renovation fund.

